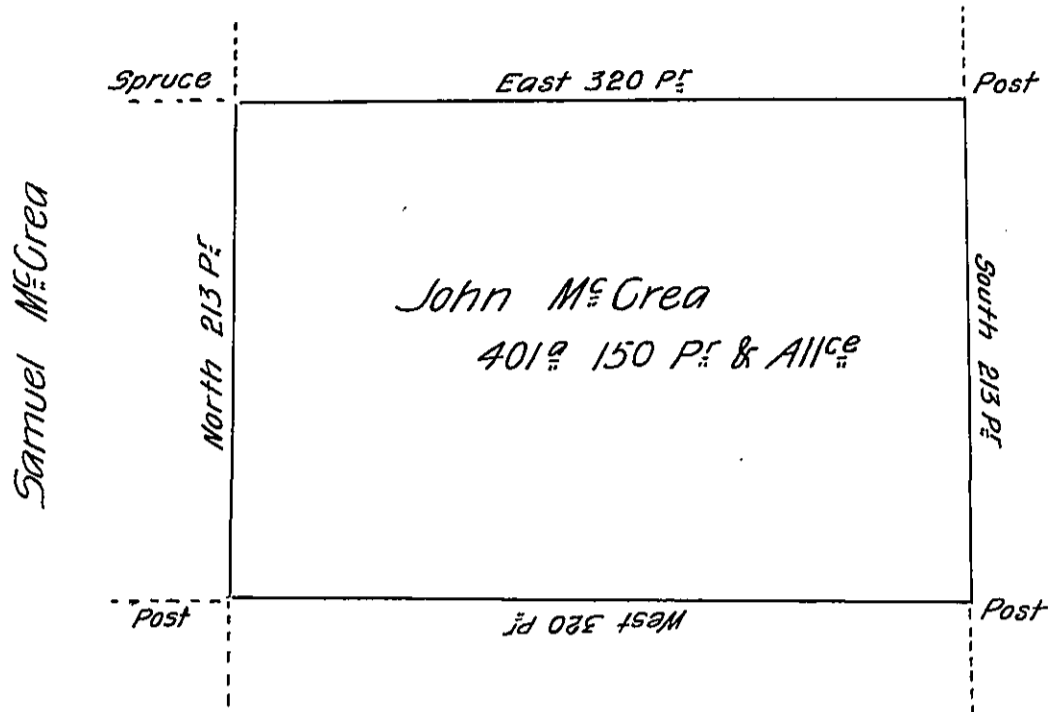


Peter Lohra.



John M^e Gullough

Situate on the West side of French Creek in Allegheny County
 Containing 401 acres and 150 P^e and allowance of Six P. Cent for Roads &c
 Surveyed the 26th day of October 1794. In Pursuance of a Warrant bearing
 date the 30th day of May 1792.

Wm Power Dy. S^e

To Daniel Brodhead Esq^e
 Surveyor General.

IN TESTIMONY that the above is a copy of the original remaining on file in
 the Department of Internal Affairs of Pennsylvania, made
 conformably to an Act of Assembly approved the 16th day of
 February, 1833, I have hereunto set my Hand and caused
 the Seal of said Department to be affixed at Harrisburg,
 this second day of January 1906

Isaac N. Brown
 Secretary of Internal Affairs.